



Hillrom™

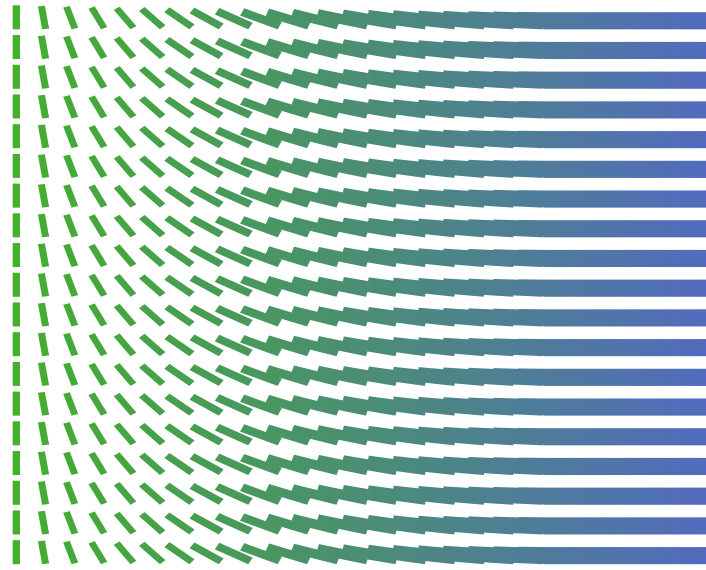


Welch Allyn®  
Medical Diagnostic Equipment

Hillrom

# The Right Equipment, Right from the Start

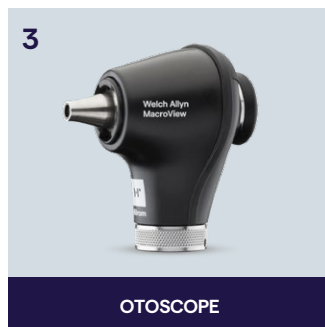
As you embark on your journey as a healthcare professional, we know that you'll be learning a ton of new things, in a short amount of time. Most importantly, you'll perfect the art of caregiving, learning to see, observe and listen to your patient to make an accurate diagnosis and develop a path forward.



## Hillrom: A partner throughout your career

Since manufacturing the world's first handheld, direct illuminating ophthalmoscope back in 1915, our roots of medical innovation and empowering physicians run deep. This legacy has paved the way for the latest advancements in physical exam technology.

Our student medical equipment will help you learn and perfect the basic physical exam. And years down the road, as you reflect on all of the patients you've helped, you'll still be able to trust Hillrom's Welch Allyn equipment you bought as a student.



Welch Allyn®  
**PanOptic™  
Plus Ophthalmoscope**

Take a closer look with our new wide-view PanOptic Plus Ophthalmoscope



Standard  
Ophthalmoscope

**20X**

LARGER VIEWING AREA



PanOptic Plus  
Ophthalmoscope

- **Inspiring New Confidence**

96% of physicians had greater confidence tracking ocular and systemic disease<sup>1</sup>

- **Switch to Digital When Needed**

Save and share images for tracking patient exams and consulting with specialists

- **Brighter, Longer-Lasting**

Built with LED lamps and DuraShock™ technology

- **Identify the Issue Earlier**

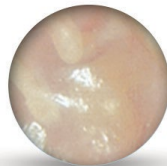
Quick Eye™ alignment to guide patient's gaze for better optic disc alignment



<sup>1</sup>Based on pre-market research conducted by Hillrom for the Welch Allyn PanOptic Plus with Welch Allyn iExaminer SmartBracket and iExaminer Pro App

# Welch Allyn® MacroView® Plus Otoscope

Clearing the path to brighter views with our new wide-view MacroView Plus Otoscope.



Standard Otoscope

# 3X

LARGER VIEWING AREA



MacroView Plus Otoscope

- **Ease of Use**

Eliminate the need to focus with our focus-free design

- **Switch to Digital When Needed**

Save and share images for tracking patient exams and consulting with specialists

- **Brighter, Longer-Lasting**

Built with LED lamps and DuraShock™ technology

- **8X Brightness**

When paired with the new LumiView™ Clear specula compared to a black specula<sup>2</sup>



<sup>2</sup>LumiView™ Clear ear specula support a 4X brighter view through an adult-size speculum and an 8X brighter view through a pediatric-size speculum when compared to black specula.

# Welch Allyn® iExaminer® System

See, Save and Share

- In the iExaminer system, the PanOptic Plus Ophthalmoscope and MacroView Plus Otoscope work together through your smartphone and the iExaminer Pro app
- Facilitates education, allowing you to document and study eye and ear exam images with your peers
- Compatible with iOS 11.0 and later and Android 7.0 and later
- Download the free iExaminer Pro application from the App Store® or Google Play™ store



## Welch Allyn® 3.5V Coaxial LED Ophthalmoscope

Patented optics enable easier entry into the eye with reduced glare and a larger field of view when compared to standard ophthalmoscopes.



**Triple-Sealed Optics:**

Keeps dust from reaching optics

**Crossed-Linear Polarizing Filter:**

Eliminates unwanted reflections

**Lens Selection Disc:**

Offers easy, fast, one-hand selection of 28 focusing lenses with a range of -25 to +40 diopters

**Aperture Selection Dial:**

18 unique aperture/filter combinations for greater versatility

# Welch Allyn® Diagnostic Sets



## SET CONTENTS & ORDER NUMBERS

Item Number	Cases		Ophthalmoscope			Otoscope		Handle		
	Hard	Soft	PanOptic Plus 118-3	PanOptic Basic 118-2	Coaxial 11720-L	MacroView Plus 238-3	MacroView Basic 238-2	NiCad 71000-C	Lithium Ion Plus 719-3	Lithium Ion 71900-USB
<b>3.5V - LED Full-Size Diagnostic Sets: Optic Only (Basic) and Digital (Plus)</b>										
71-PM2LXU	●			●			●			●
71-PM3LXE	●		●			●			●	
71-PM3LXES		●	●			●			●	
<b>3.5V - LED Traditional Coaxial Ophthalmoscope and MacroView Basic Otoscope Sets</b>										
71-SM2LXU	●				●		●			●
71-SM2CXX	●				●		●	●		
<b>92821</b>	Pocketscope Diagnostic Set – Ophthalmoscope/Otoscope Set with AA Batteries and Soft Case									
<b>92851</b>	Pocketscope Diagnostic Set – Ophthalmoscope/Otoscope with Rechargeable Batteries and Charger									

# Welch Allyn® Pocket Plus LED



Examine your patients in style, with four colour options to choose from, and optional handle and window bumpers included in the set.

- SureColor™ LED lamps come standard
- Lightest-weight ophthalmoscope and otoscope for comfort and control during examinations
- Portable, to help you meet the challenges you face when treating patients
- All the apertures and filters as in our full-size ophthalmoscopes, so you don't have to sacrifice any functionality

<b>92880-BLK</b>	Pocket Plus LED Set, Onyx with Hard Case	<b>92880-WHT</b>	Pocket Plus LED Set, Vanilla with Hard Case
<b>92880-PUR</b>	Pocket Plus LED Set, Plum with Hard Case	<b>92880-BLU</b>	Pocket Plus LED Set, Blueberry with Hard Case

Welch Allyn®

## 3.5V Lithium Ion Plus Handle

The Welch Allyn® Lithium Ion Plus Handle powers any 3.5V instrument head with LED for more than 120 minutes – twice as long as a conventional handle.

Light intensity control ring for precise light control

Auto-off feature to save battery life

Integrated USB-C port for fast charging on the move – achieve 75% charge in 90 minutes



Welch Allyn®

## 3.5V Nickel-Cadmium Convertible Handle

Traditional chrome-plated brass construction for durability and long life, rechargeable, and can also be converted for use with standard C-cell batteries.

### How does the handle work with either rechargeable or C-cell batteries?

Simply remove the rechargeable battery and charging section and replace with two C-cell batteries and the converter ring.

### When would the convertible handle most likely be used?

The convertible handle is a lifesaver if you are on-call or taking an exam and have forgotten to recharge the battery. Also, the convertible handle is very handy when you are working overseas or in areas where it is difficult to find electricity.

Rheostat control sets light intensity

Well-balanced handle with knurled finish evenly distributes weight, rests comfortably in hand

Transformer  
ETL/UL Recognized

C-cell Converter

NiCad Battery

C-cells

#71000-A

#71000-C



## Blood Pressure Aneroids & Cuffs

Welch Allyn®

# Tycos® DS58 Classic Hand Aneroid

With gear-free DuraShock™ technology, you can count on the classic aneroid to remain in calibration longer than traditional aneroids, providing more accurate readings over time.

**DS58 w/ Adult Cuff:** DS58-11  
**DS58 w/ Multi-Cuff Kit:** DS58-MC

Thumbscrew air-release valve provides constant deflation and is positioned for use in either hand

Gear-free design withstands a 60" drop for more accurate readings over time

Laser-engraved dial face is computer-matched and calibrated to the movement inside for accuracy



Welch Allyn®

# Tycos® DS66 Trigger Hand Aneroid

The Tycos® Trigger Hand Aneroid features a modern, ergonomic design to fit perfectly in the right or left hand.

Gear-free design withstands a 60" drop for more accurate readings over time

**Trigger Deflation Valve:** Provides smooth and easy control of pressure deflation

Large, easy-to-read dial face



**DS66 w/ Adult Cuff:** 5098-27  
**DS66 w/ Multi-Cuff Kit:** 5098-30



Welch Allyn®

# Bronze Series DS44 Integrated Aneroid

This integrated-style gauge features a FlexiPort cuff-mounted design that's compact and lightweight. In use, the gauge can be rotated to any orientation desired by the clinician. With its gear-free DuraShock™ technology, you can count on the DS44 Integrated Aneroid to remain in calibration longer than traditional aneroids, providing more accurate readings over time.

**DS44 w/ Adult Cuff: DS44-11C**



## Why is it important to invest in a sphygmomanometer (aneroid)?

Taking a patient's blood pressure is one of the most frequent diagnostic tasks you'll perform throughout your medical career. High blood pressure (hypertension) affects nearly 1 in 4 Canadians<sup>3</sup> and plays a major role in deaths due to cardiovascular disease. The sphygmomanometer is your tool for early detection of this silent killer and will be used on nearly all of your patients.

It is vitally important to be well trained in blood pressure measurement technique and to have an accurate, reliable instrument to help you to properly diagnose and determine treatment options. Owning your own sphygmomanometer will allow you to practice and gain competency in blood pressure measurement.



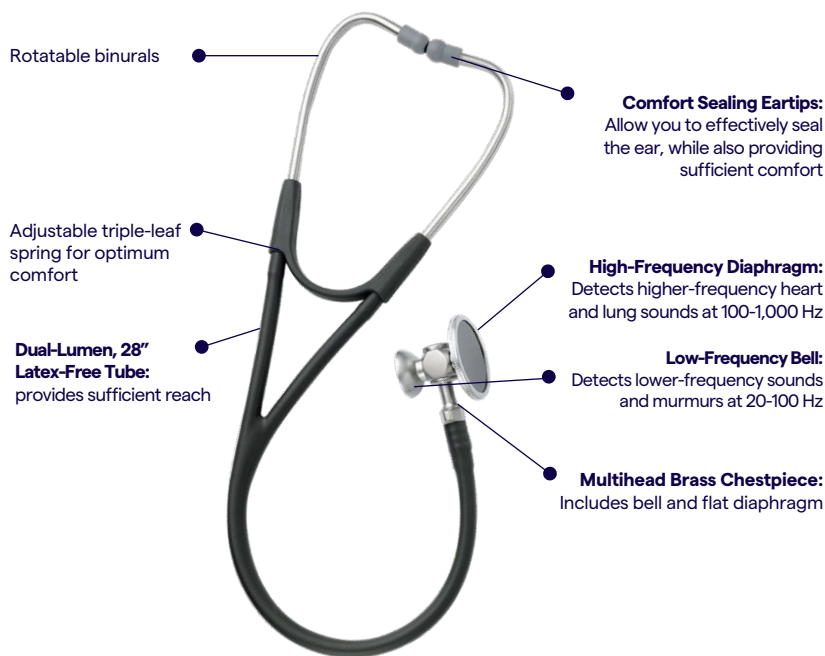
#DS58-MC

<sup>3</sup> DeGuire J, Clarke J, Rouleau K, et al. Blood pressure and hypertension. Health Reports. 2019;30(2):14-21.

## Cardiology Stethoscopes

Our stethoscopes were developed during a 30-year association with Dr. W. Proctor Harvey, MD, the first and only "Master" of cardiology awarded by the American College of Cardiology, and designed to accentuate important, high-frequency heart sounds.

### Harvey™ DLX Double-head Stethoscopes



### Harvey™ Elite Stethoscopes



#### What should I look for in a stethoscope?

You want to be sure that the stethoscope fits correctly. If you can't get sound past the eartip to your tympanic membrane, all other features are unimportant. The more custom the fit, the easier the sounds travel to your ear. As a student, you must consider the versatility of the scope. Remember you will be doing rotations, including paediatrics and cardiology. The Harvey DLX and Elite, for example, adapt easily for paediatrics, and the bell is essential for cardiology.

Every Harvey DLX and Elite stethoscope comes with a free copy of Harvey Heart Sounds Sampler, an interactive CD for learning heart sounds and a Cardiology Accessory Kit.

#### Cardiology Accessory Kit Includes:

- Paediatric diaphragm assembly
- One Pair/Each: medium soft eartips, large hard eartips and extra-large hard eartips

#### Ordering Information

**Harvey™ DLX Stethoscope**  
**Black:** 5079-325S  
**Burgundy:** 5079-328S  
**Green:** 5079-327S  
**Navy:** 5079-326S


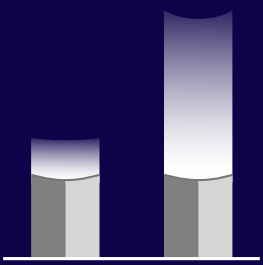
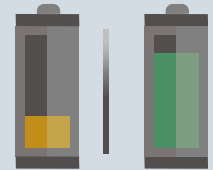
**Harvey™ Elite Stethoscope**  
**Black:** 5079-125S  
**Burgundy:** 5079-270S  
**Green:** 5079-284S  
**Navy:** 5079-271S

# Welch Allyn® Accessories

<p><b>Insufflator Bulb</b> Attaches to port for pneumatic otoscopy</p> <p>Insufflator Bulb for MacroView Otoscope</p> 	<p><b>Disposable Universal</b> 2.75 mm and 4.25 mm disposable specula eliminate cross-contamination</p> <p><b>52700</b> Slotted Specula Instrumentation Tip</p> <p><b>52432-U, 52434-U</b> Disposable KleenSpec Specula</p> <p><b>52432-CLR-1, 52434-CLR-1</b> LumiView™ Disposable Clear Ear Specula</p> 	<p><b>LED Replacement Lamps</b> Upgrade to LED lamps for longer life, high efficiency, and SureColor™ LED technology that reduces glare while preserving the colour and clarity of the view.</p> <p><b>03100-LED</b> Traditional Diagnostic Oscopes</p> <p><b>04900-LED</b> Traditional Ophthalmoscopes</p> 
<p><b>76600</b> Professional PenLite</p> 	<p><b>11840-IEX</b> iExaminer SmartBracket accessory</p> 	<p><b>Fiber-Optic Finnoff Transilluminator</b> Eliminates patient discomfort in transillumination of frontal and maxillary sinuses.</p> <p><b>41100</b> Fiber-Optic Finnoff Transilluminator</p> 

# Welch Allyn® LED Lamps

LED technology provides the benefits of LED while operating at a colour similar to halogen.

	<p><b>30X LONGER LIFE</b></p> <ul style="list-style-type: none"> <li>• 30X the lamp life of a traditional halogen lamp in just one LED lamp</li> <li>• 80% cost savings over the life of the lamp</li> </ul>  <p>HALOGEN      LED</p>	<p><b>LED IS ENERGY EFFICIENT</b></p> <ul style="list-style-type: none"> <li>• 3X the on-time vs. halogen with Welch Allyn® rechargeable handles</li> <li>• Lower operating temperature intended for greater patient/clinician comfort</li> </ul>  <p>HALOGEN      LED</p>
---	--	---

Welch Allyn®

# Unconditional Student Warranty

While you're a student and through your second year of residency, all Welch Allyn® student diagnostic instruments are unconditionally guaranteed against failure. The only thing we don't cover is loss or theft. This includes our lamps – if the light burns out, we'll replace it free of charge.



## Diagnostic Sets

After you complete your education and second year of residency, Hillrom will continue to repair or replace, free of charge, any parts of our manufacture that prove to be defective for reasons other than misuse, neglect, damage during shipment, or normal wear and tear.



## Blood Pressure Aneroids

Our Welch Allyn® Tycos® DS58 Classic features a lifetime warranty against parts and manufacturing defects, and free recalibration if ever required. The DS66 Trigger Hand Aneroid carries a 15-year warranty, including free recalibration if required. The DS44 Integrated Aneroid is backed by a five-year calibration warranty.



## Stethoscopes

The Harvey Elite and Harvey DLX Double-head Stethoscopes carry a 10-year warranty beyond the unconditional guarantee during the time you are a student through your second year of residency.

For more information visit [www.hillrom.ca](http://www.hillrom.ca)

**hillrom.ca**

Hill-Rom reserves the right to make changes without notice in design, specifications and models. The only warranty Hill-Rom makes is the express written warranty extended on the sale or rental of its products.

©2021 Welch Allyn, Inc. ALL RIGHTS RESERVED. APR267001 rev 1 16-AUG-2021 EN-CA